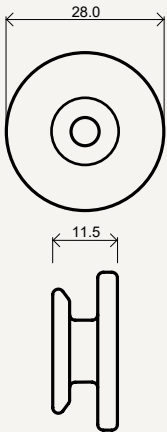


# 010 T-Slot Lining Clip



XFrame's 010 clip system is designed to make the installation of demountable architectural wall finishes time and cost-efficient. Made from 100% recycled nylon, the clip takes advantage of a hidden key-hole milled into the rear of linings to achieve a strong yet easily reversible panel connection.



## Key features:

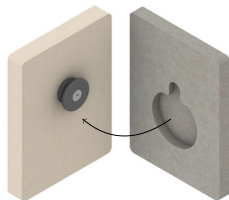
- Singled-sided design for fast on-site installation.
- Keyhole design is self-aligning ensuring precision panel seams.
- Supports heavy panels (80kg per clip).
- Low profile design leaves a 3mm gap between lining and frame.
- Shallow vertical lift-off requirement.
- Compatible with off-the-shelf CNC Milling equipment.
- Uses standard counter-sunk 6g chipboard screws.

## Installation process:



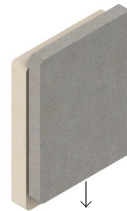
### Step 1

Screw clip into supporting material.



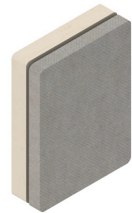
### Step 2

Align pocket against clip.



### Step 3

Lower sheet into position.



### Step 4

Check alignment.

**Minimum requirements:** Keyhole created using T-Slot CNC milling head in conjunction with an end-mill. Minimum stock (lining material) depth of 12mm (1/2 inch). Female clip available on request for sub 12mm linings or if no CNC milling is available. Check local availability with XFrame.